

ASSURE-19

• Rapid Point-of-Need COVID-19 Testing

ASSURE: Accelerated Sensor Solution
for Urgent Response to Epidemics

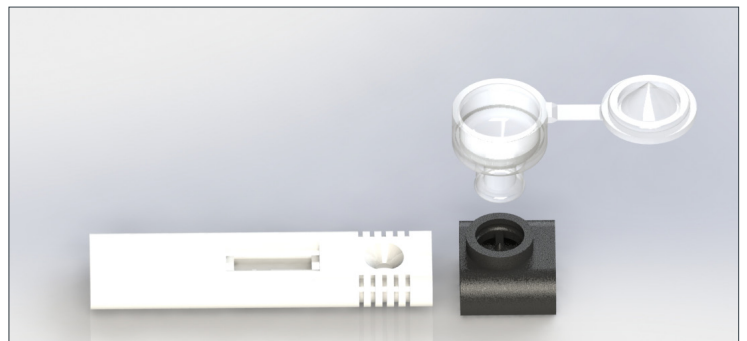
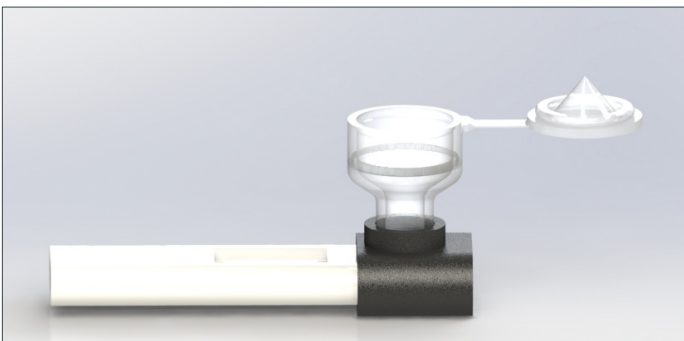


SIMPLE, RAPID, ACCURATE COVID-19 TESTING

ASSURE-19 is a highly specific yet simple 'spit test' for detecting the COVID-19 Coronavirus. ASSURE utilizes a groundbreaking approach to screen for the presence of viruses in saliva in under 10 minutes, with the simplicity of an at-home pregnancy test.

Unlike painful nasal swabs or post-COVID blood-based antibody tests, ASSURE-19 requires no special lab equipment, technician, nor training. And unlike other spit tests that require specimens to be mailed into a laboratory for testing, ASSURE is a 'Lab-on-a-Stick': it delivers results immediately.

The test displays a positive or negative result by simply reacting to users' saliva. Results can be detected even faster using the ASSURE smartphone app. ASSURE tests are a **simple, safe, and reliable** testing platform that enables **cheap**, rapid, highly specific COVID-19 (SARS-CoV-2) testing.



CONTACT INFORMATION:

assure-19@oceanit.com | [Twitter: @oceanit](https://twitter.com/oceanit) | [Facebook.com/oceanit](https://facebook.com/oceanit) | oceanit.com | assure19.com

ASSURE tests utilize **engineered-for-purpose** molecules designed for targeted response to a specific portion of a virus’s genomic sequence. With COVID-19, the ASSURE-19 test targets specific proteins inside the virus.

ASSURE-19 comes in the form of a Lateral Flow Assay (LFA). A specimen (spit in a cup) is collected, combined with specific reagents, and then applied to the LFA stick. The LFA ‘Lab-on-a-Stick’ contains the **engineered-for-purpose** molecule that can detect the presence of COVID-19 in the saliva specimen. The reaction incubates for several minutes before results can be read by the ASSURE app on your smartphone.

ASSURE-19 outperforms other methods of testing such as Genetic Detection and Antibody detection in speed, simplicity, and accuracy. Most importantly, ASSURE-19 test kits are cheap and can be produced in large quantities to address immediate screening needs of airports, businesses, schools, and more.

	ASSURE-19	PCR Lab Detection	Antibody
Environment	At-home collection and testing saliva, “spit”	Clinic collection and laboratory testing nasal swab	Clinic collection and laboratory testing blood draw
Equipment	None	qPCR system, micropipettes, tubes, etc.	Proprietary reader
Handling	None, room temperature stable	Refrigeration and freezer storage	Refrigeration and freezer storage
Tools	Phone app	Polymerase chain reaction, readout adapter	Proprietary reader
Technology	Lab on a Chip	Genetic detection by amplification	Antibody detection
Cost	Very Inexpensive	\$\$/\$\$\$	\$\$\$
Speed	10 minutes	Hours – 3 days	15 minutes
Availability	Highly scalable, Edge Manufacturable	Limited scalability	Supply chain
Science	Molecular “lock and key” when virus present	PCR, Sequence analysis, current virus presence	Antibody detection, past exposure no information about current status

CONTACT INFORMATION:

assure-19@oceanit.com | [Twitter: @oceanit](https://twitter.com/oceanit) | [Facebook.com/oceanit](https://facebook.com/oceanit) | oceanit.com | assure19.com